



Acuity Revenue Cycle Analytics™

Product Release Notes

May 2025 (v2025.02)

Table of contents

- Overview 3**
- What's new 3**
 - Universe enhancements 3
 - Acuity "Claim History" additions..... 3
 - Acuity "277 Responses" additions..... 4
 - Remit "Import Date" additions..... 4
 - Business Objects upgrade 5
 - Added ability to freeze headers in tables 5
 - Added ability to conditionally hide objects..... 5
 - Added ability to maximize charts to full window view 6
 - Added ability to return to current date in date selector..... 6
 - Added ability to copy and paste report data into clipboard 7
 - Added ability to apply object display format to entire report..... 7

Overview

This Acuity 2025.02 release includes the following updates:

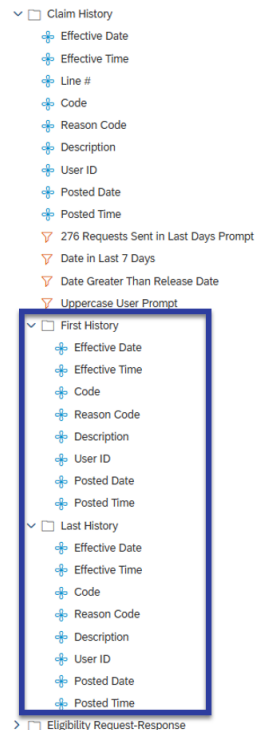
- **Acuity Universe Enhancements** – The Acuity universe adds objects to the “Claim History” folder that provide the ability to see the first or most recent history for a given set of status codes. It also adds the ability to see first or last “277 Responses” as a means to provide better visibility into pass rates and greater insight into pending denials.
- **Remit Universe Enhancements** – Remit additions include new objects to summarize payment dates. Year, quarter, month, and day objects were added as options to the “Import Date” folder.
- **Business Objects Upgrade** – Enhancements were made to Business Objects usability that include a new freeze header feature, the ability to maximize charts to a full window view, the ability to conditionally hide objects, the ability to set the display format of objects to apply to the entire report, and the ability to copy and paste report data to your clipboard.

What’s new

Universe enhancements

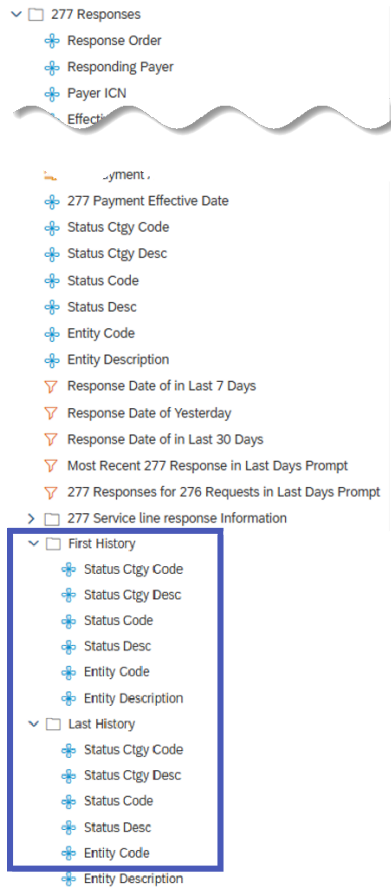
Acuity “Claim History” additions

Enhancements to the Acuity universe include additions to the “Claim History” folder that provide the ability to see the first or most recent history for a given set of status codes.



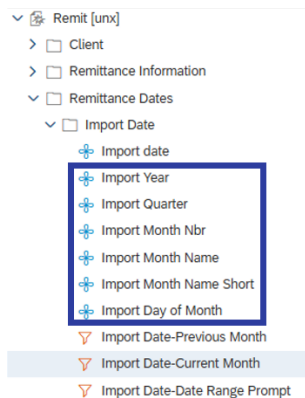
Acuity “277 Responses” additions

They also include the ability to see first or last “277 Responses” to provide better visibility into pass rates and greater insight into pending denials.



Remit “Import Date” additions

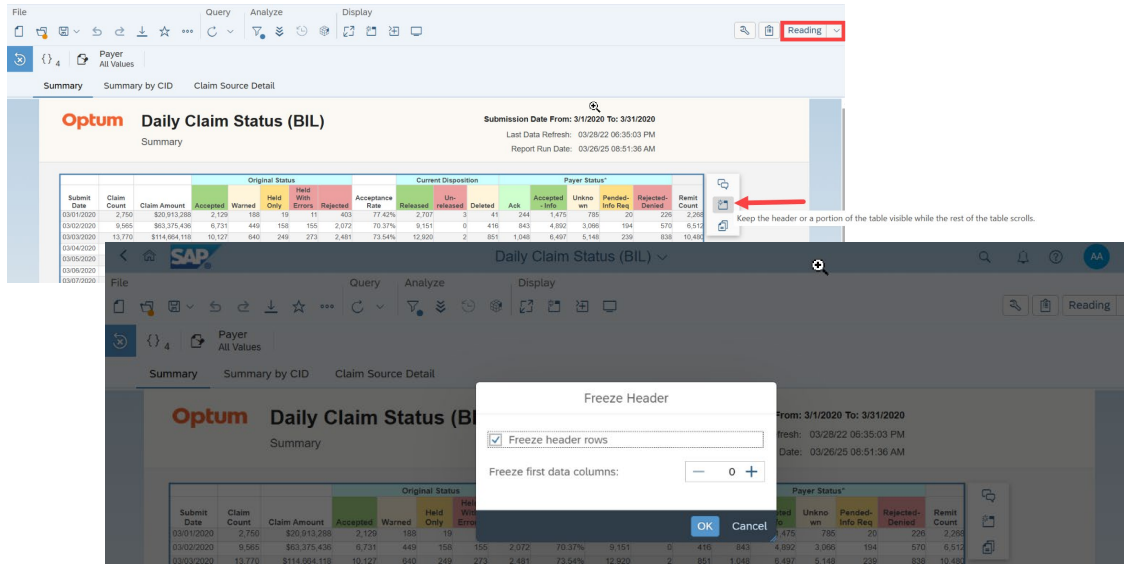
Year, quarter, month, and day objects were added to the “Import Date” folder in the Remit universe to help with summarizing payment dates.



Business Objects upgrade

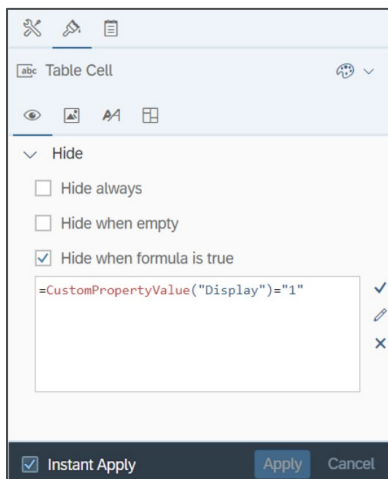
Added ability to freeze headers in tables

A **Freeze Header** option was added in Design mode for table construction. If the option is selected for a table, the table headers will remain on display while scrolling through the report in Reading/Presentation mode. You can also specify the number of data segments to freeze after the header using the “Freeze first data columns” counter.



Added ability to conditionally hide objects

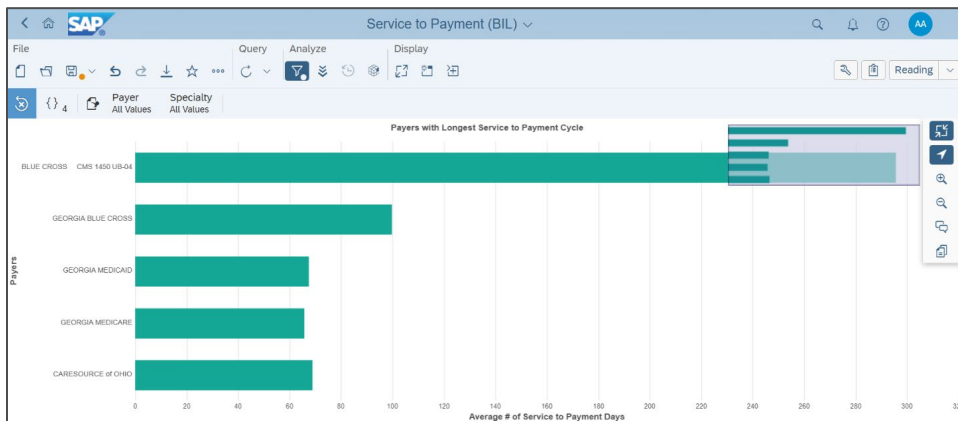
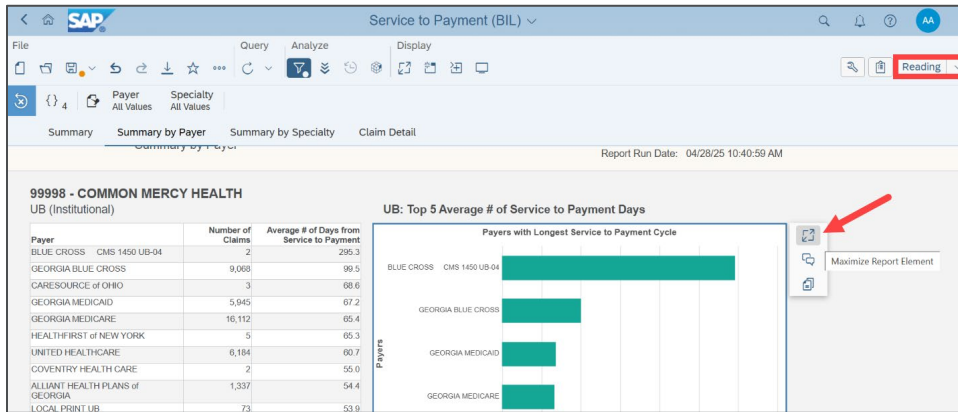
This release adds the ability to always hide objects, hide them when empty, and hide when a formula is evaluated as true. You can also select a vertical and horizontal table and set these conditions. You can do this directly in the **Build > Format > Display Settings** tab, or in the **Data > Feeding** tab, from an object's context menu.



Added ability to maximize charts to full window view

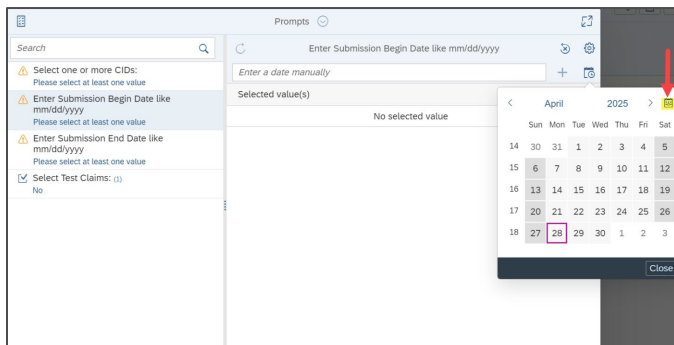
A new **Maximize** button was added in the floating toolbar in **Reading** mode that expands charts and tables to full view. When a chart or table is maximized, a navigation window is displayed in the top right corner. This window displays a full preview and the zoom area of the corresponding item.

Click the **Show/Hide navigation window** button in the floating toolbar to hide or display the window. Click on the window to move the zoom area around. Drag and drop to reposition it.



Added ability to return to current date in date selector

Use this new “current date selector” to return to the current date after navigating other dates.



Added ability to copy and paste report data into clipboard

Users connected through HTTPS or using the Rich Client can copy lines and columns from **Dataset View** tables or facets and paste them into the Operating System's clipboard.

1. With your mouse, select an area or multiple rows and columns in a table or a facet. It is not possible to select and copy disjointed cells, rows, or columns. You can use the following shortcuts:
 - **[Ctrl] + [A]** to select a full table or a full facet.
 - **Right-click + [Shift]** to select an area.
 - **Right-click + [Ctrl]** to toggle a selected area.
2. Right-click this selection (rows headers, lines headers, selected area) and select the **Copy** command in the context menu (you may also use the [Ctrl] + [C] shortcut). Both the selected cells and their headers are copied into the clipboard, but the copy cannot exceed 25,000 cells.

If you paste the selection into another tool that supports Rich Text, the table will be added with its formatting and borders. If you paste it into a simpler text editor like Notepad, a plain text version is used. Its format (column separators, text qualifiers, charset) is defined in the options set in the **Export to** dialog box when exporting to CSV and [saved in user settings](#).

Added ability to apply object display format to entire report

Object display format allows you to set the display format of an object for the entire report instead of for each table or chart where the object is used.

